

JAPAN ESSENTIALS

TRAVEL ITINERARY

DAY 1

WELCOME TO JAPAN!

Touch down in Tokyo! Arrive into your Tokyo hostel in the historic Asakusa area to be greeted by your tour guide. Tonight we'll take you out to feast on Japanese cuisine and meet the rest of your group. After dinner when the crowds have all dispersed, we explore the iconic Tokyo Senso-ji Temple by night!



Sakura Hostel Asakusa
(Multi-share)



Dinner



Welcome Dinner,
Senso-Ji Temple



Tokyo Skytree

DAY 2

Tokyo

We'll start the morning with a Japan Orientation Briefing. You'll learn simple Japanese customs and phrases to help you navigate your way across the country. Then, we'll head out to the birthplace of Japanese teen pop culture, Harajuku. After that, we'll explore Yoyogi Park, which hosts the beautiful Meiji Shrine. Later, we'll head to Akihabara - Tokyo's electric town - and be dazzled by all the neon lights and crazy shops in store. You can challenge each other in the arcades, check out the famous Maid Cafes, or simply wander around the area.



Sakura Hostel Asakusa
(Multi-share)



Breakfast



Japan Orientation,
Tokyo Districts



Maid Cafe

DAY 3

Tokyo

The first half of the day is yours to explore. Our guide is on hand to help you with your plans, but you could either take a sushi-making class, visit the Imperial Palace, or simply allow yourself to get lost in this magical city. In the evening, we'll head to Shinjuku, where we'll see an unparalleled skyline of Tokyo, check out the famous Omoide Yokochō alley, and grab some dinner before viewing the famous Shibuya Pedestrian Crossing. For those of you who want to try street go-karting, this is your chance! Take to the streets in a go-kart while wearing your favorite character costume. It doesn't get more wild than this!



Sakura Hostel Asakusa
(Multi-share)



Breakfast



Shibuya Crossing,
City walks



TeamLab






Sushi making class,
Street Go Karting



Today we take the aptly named “Romance Car” to the stunning mountain town of Hakone. After checking into our hostel in the town of Hakone, we set off taking the train further into the mountains. Why is Hakone so special? Well, not only is the food incredible but you can get a spectacular view of Mt Fuji (weather dependent.) After a day of exploring and taking photos of Japan’s most famous mountain we’ll head back to our guesthouse accommodation before having a family-style dinner with the crew.

DAY 4
Hakone

-  **Gora Gaku Guesthouse**
(twin or triple tatami mats)
-  **Breakfast & Dinner**
-  **Mt Fuji Viewing, Romance Car**
-  **N/A**

Say goodbye to the serenity of Hakone as we make our way to the ancient capital of Japan by bullet train; Kyoto. Check in to our accommodation close to the traditional area, and then we head out to explore the area. In the evening our guide will show us around Kyoto’s Gion district, known for Geisha’s (Japan’s traditional art form of entertainment), if you are lucky enough, you might even spot one. After our walk, we’ll take you to one of the best yakitori (grilled chicken sticks) for an included dinner.

DAY 5
To Kyoto

We’ll rise before dawn and take the subway to the Fushimi-Inari Shrine. We arrive early to escape the throng of tourists and work our way through the mountain exploring corridors of never ending red gates. After, we will head to Kiyomizu-dera temple, one of Japan’s most famous temples. A stunning bamboo and wooden complex that sits high in the mountain side. You will have the rest of the day free to explore at your own pace or try a traditional tea ceremony.

DAY 6
Kyoto

- | | | | |
|--|--|--|--|
| <ul style="list-style-type: none"> <li style="display: flex; align-items: center; gap: 5px;"> Piece Hostel Kyoto
(Multi-share) <li style="display: flex; align-items: center; gap: 5px;"> Dinner <li style="display: flex; align-items: center; gap: 5px;"> Gion District Walking Tour <li style="display: flex; align-items: center; gap: 5px;"> Geisha Performance | <ul style="list-style-type: none"> <li style="display: flex; align-items: center; gap: 5px;"> Piece Hostel Kyoto
(Multi-share) <li style="display: flex; align-items: center; gap: 5px;"> Nishiki Market <li style="display: flex; align-items: center; gap: 5px;"> Kiyomizu-Dera, Fushimi-Inari Shrine <li style="display: flex; align-items: center; gap: 5px;"> Kimono Hire, Tea ceremony | <ul style="list-style-type: none"> <li style="display: flex; align-items: center; gap: 5px;"> N/A | |
|--|--|--|--|

DAY 7

Kyoto

The day starts with a train ride to Arashiyama, a town surrounded by mountains and a river running through it. The itinerary includes a visit to the bamboo forest, climbing Monkey Mountain, and an optional traditional Japanese boat ride through the valleys. You will have the afternoon free to explore as you like or do one of our optional activities.



Piece Hostel Kyoto
(Multi-share)



N/A



Arashiyama Bamboo Forest, Monkey Mountain



Osaka Canal Boat Tour, Arashiyama trad. boat



Samurai museum and sword experience

DAY 8

Osaka

We head to the stunning Golden Pavilion, a beautiful gold laden building surrounded by a lake and traditional Japanese garden. After we'll head to Daitoku-ji, a quiet, leafy complex of old temples where you can silently reflect on your adventures so far. We then head on to Osaka where in the evening, we explore the famous Dotonbori area. The food, people, lights, and colors of the "kitchen of Japan" will be experienced. Your guide will take you to the best spots for street eats, and you'll get to taste some of the delicacies which make Osaka such a famous foodie city. Finish up the evening with a night of karaoke and drinks!



The Stay Shinsaibashi
(Multi-share)



Breakfast & Dinner



Golden Pavilion, Zen Garden visit, Imperial Palace visit, Osaka Food Tour, Karaoke



Heian Shrine Tour, Karaoke

DAY 9

Osaka

After nursing your head's from last night's antics, it's time to say goodbye to your group and the new friends you have made from your tour. We hope we have shown you the best that Japan has to offer!



N/A



Breakfast



N/A



N/A

JAPAN

ACCOMMODATION GUIDE

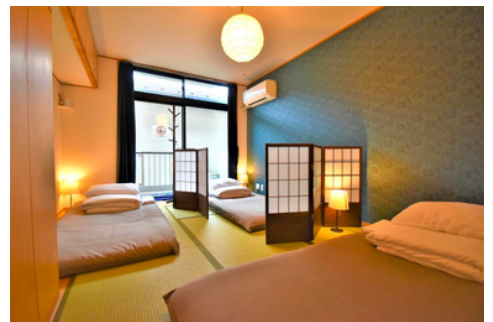
TOKYO - SAKURA HOSTEL ASAKUSA*

Multi-share
*or similar



HAKONE - GORA GAKU GUESTHOUSE*

Twin Rooms
*or similar



KYOTO - PIECE HOSTEL*

Multi-Share
*or similar



OSAKA - THE STAY SHINSAIBASHI*

Multi-share
*or similar

